



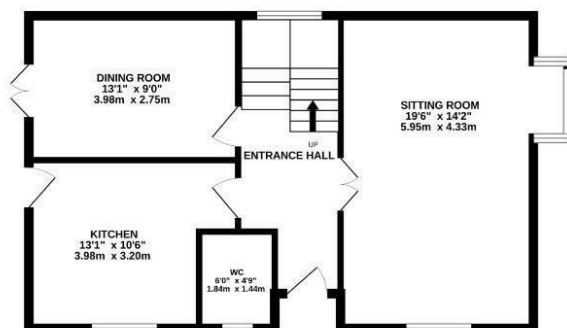
Beaumont Drive

Cherry Lodge, Northampton

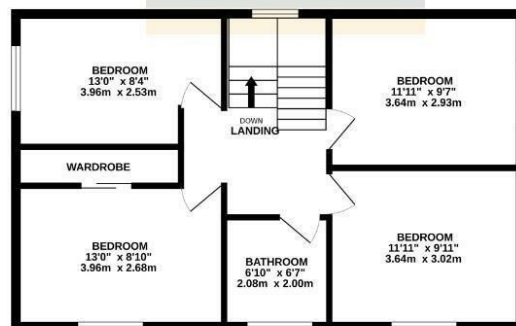
oriordanbond
SALES & LETTINGS



GROUND FLOOR



oriordanbond
SALES & LETTINGS



TOTAL FLOOR AREA: 1231 sq.ft. (114.4 sq.m.) approx.
Whilst every attempt has been made to ensure the accuracy of the floorplan contained here, measurements of doors, windows, rooms and any other items are approximate and no responsibility is taken for any error, omission or mis-statement. This plan is for illustrative purposes only and should be used as such by any prospective purchaser. The services, systems and appliances shown have not been tested and no guarantee as to their operability or efficiency can be given.
Made with Metreplan CS2024

Beaumont Drive

Cherry Lodge

NN3 8PS

PRICE £290,000

A four bedroom detached family home offering great size living accommodation with off road parking and single garage. Situated in the popular area of Cherry Lodge, the property provides good access to local schools and Weston Favell Shopping Centre.

In need of a light renovation, the accommodation comprises entrance hall, cloakroom/WC, full length sitting room with bay window and a kitchen with access to the rear. Additionally to the ground floor is a separate large dining room with French doors to the rear garden. To the first floor are four fantastic size bedrooms and a fitted shower room. Externally are front, side and rear gardens with mature plants and shrubs, a driveway providing off road parking and a single garage. Further benefits include a newly fitted boiler and uPVC double glazing. (C/1231/M)

Additional information

- Council Tax Band: D
- Energy Efficiency Rating: C

Viewing

Viewing strictly by appointment – details below

Disclaimer

O'Riordan Bond Estate Agents Limited has not tested apparatus, equipment, fittings or services and so cannot verify they are in working order. The buyer is advised to obtain verification from their solicitor or surveyor.

O'Riordan Bond Weston Favell Sales

01604 784007

westonfavell@oriordanbond.co.uk

